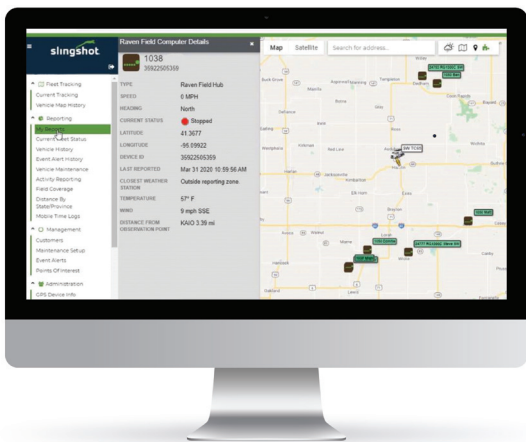


Users gain an average of 20% efficiencies when they use Raven’s Slingshot platform to create a **Connected Workflow™**

The Slingshot platform is the backbone of our efficiency-enhancing portfolio. Using it creates a **Connected Workflow** that syncs operations from the office to the field. Now, with **Slingshot Fleet Tracking**, we provide ag retailers and enterprise farms with an expanded fleet and asset tracking suite through the Slingshot platform.

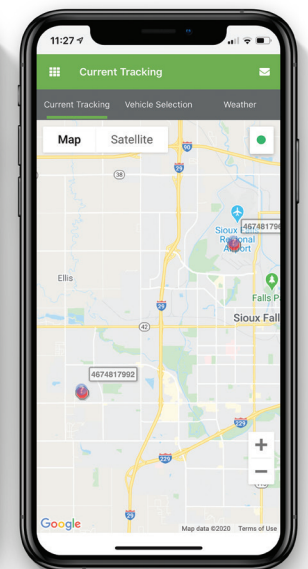
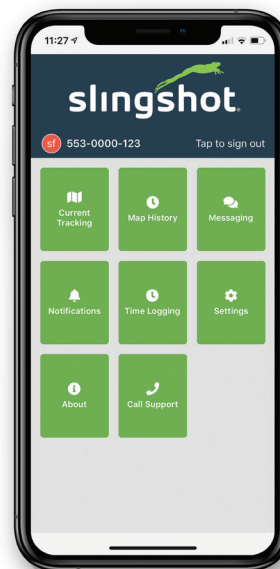


REAL TIME FLEET TRACKING

Backed by Razor Tracking, Slingshot Fleet Tracking allows users to wirelessly track the location and other important information about their trucks, vehicles, trailers, tanks and other moving assets by providing accurate machine running data in real-time. This gives ag retailers and enterprise growers a holistic view of their entire fleet — including work, idle and transit times — to better manage their equipment, assets and operations.

WHAT YOU GET: FLEET TRACKING FEATURES

- Real-time view of a single vehicle, entire fleet or predetermined group
- Geofencing of a field, delivery point or general point-of-interest
- Precise location data with status, speed, relative address, weather stamping
- Vehicle performance history
- Easy and custom management of vehicle performance
- Maintenance alerts
- Management of unlimited users with access credentials
- View of vehicle location for easy access to send to customers
- Free mobile app which allows you to view your fleet while on-the-go



We'll Work With You

Whether you have Raven in the cab or not, you can use Slingshot Fleet Tracking to manage your fleet.



The RTB™ is a battery-powered tracking device that provides last known position and current position 6 times throughout a 24-hour period.

- Enclosure Rating: IP67
- Mounting location: RTB is intended to be outside of the cab and can be attached via screws, tape or magnet
- Battery life: Estimated at 3 years



The RTV™ is a vehicle tracking device that provides near real-time position tracking when connected to a vehicle's battery source.

- Enclosure Rating: IP66
- Mounting location: Direct wire to mobile vehicle or plug into the OBD-II port of the vehicle



Field Hub 2.0 connects your operator, managers and Slingshot support via the Internet while providing a complete web experience on your Raven field computer. It is compatible with Viper® 4+ (CR7tm + CR12TM) automatically ensuring jobs are in the field computer, the operator is in the right field and product is applied correctly.

WHY IT MATTERS

Slingshot Fleet Tracking provides a simple system to help you access information about your operation's assets in real-time, all on one platform. With that information you're better equipped to manage your business and have greater peace of mind.



Increase productivity



Track the safety and security of your fleet



Improve accuracy



Access to full fleet and asset integration and analysis

HOW TO GET STARTED (PRICING)

PART NUMBER	DESCRIPTION	Tiered Pricing per Unit (\$USD)				
		0-24	25-49	50-74	75-99	100+
117-0171-807	Kit, RTV-ATT-10, Vehicle Tracker	\$ 230	\$ 220	\$ 210	\$ 200	\$ 185
117-0171-808	Kit, RTV-VZW-10, Vehicle Tracker	\$ 230	\$ 220	\$ 210	\$ 200	\$ 185
117-0171-809	Kit, RTB-ATT-10, Asset Tracker	\$ 215	\$ 205	\$ 195	\$ 185	\$ 175
117-0171-810	Kit, RTB-VZW-10, Asset Tracker	\$ 215	\$ 205	\$ 195	\$ 185	\$ 175

If you are interested in taking advantage of Raven's Fleet Tracking, contact your Raven representative for an online demonstration. To learn more about the complete capabilities of the Slingshot platform, visit ravenslingshot.com.



PART NUMBER	DESCRIPTION	List (\$USD)
077-7000-062	Subscription, 1 mo, RTV, Slingshot Fleet Tracking	\$ 25
077-7000-067	Subscription, 1 mo, RTB, Slingshot Fleet Tracking	\$ 15

- Monthly subscriptions will be billed following each month
- 6 month suspension of units available; only 1x per calendar year

